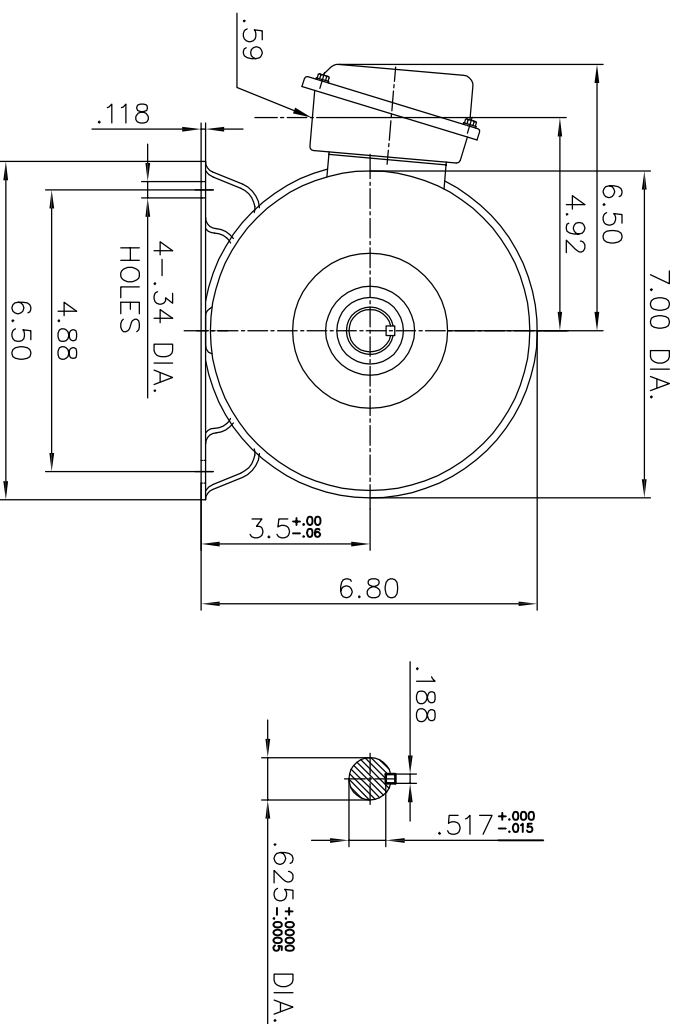
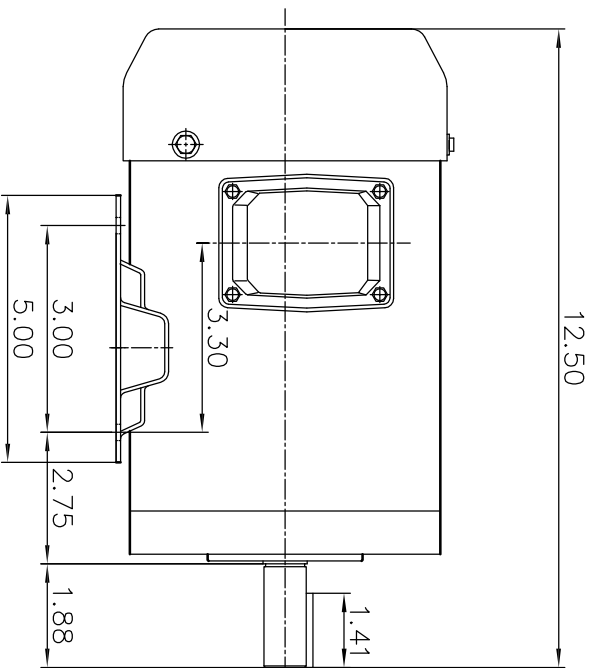


ALTERNATING CURRENT MOTORS

ENCLOSURE: TOTALLY-ENCLOSED
MOUNTING: FOOT

SQUIRREL-CAGE INDUCTION
STAINLESS STEEL FRAME
FRAME 56

COOLING: FAN COOLED



NOTES:

- (1) DIMENSIONS ARE IN INCHES.
- (2) APPROXIMATE WEIGHT = 1/4HP, 2P, - 32 LBS. 1/4HP, 4P, - 32 LBS.
1/4HP, 6P, - 32 LBS. 1/3HP, 2P, - 33 LBS.
1/3HP, 4P, - 33 LBS. 1/3HP, 6P, - 33 LBS.
1/2HP, 2P, - 34 LBS. 1/2HP, 4P, - 34 LBS.
1/2HP, 6P, - 34 LBS. 3/4HP, 2P, - 34 LBS.
3/4HP, 4P, - 34 LBS.
- (3) DRIVE END BEARING 6205-2RZ
OPPOSITE DRIVE END BEARING 6205-2RZ

FRAME- _____ ITEM _____ HP- _____ RPM- _____ PH- _____ CERTIFIED FOR- _____ VOLTS- _____
ORDER- _____



DR. BY Berry
CK. BY Sky shen
APP. BY C. L. Wong
DATE 2017.04.18

DIMENSION SHEET

SAS-013291