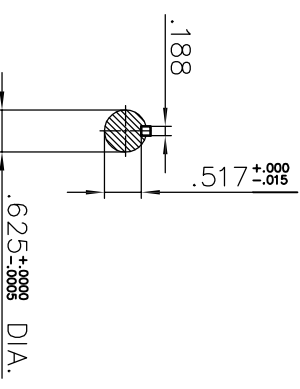
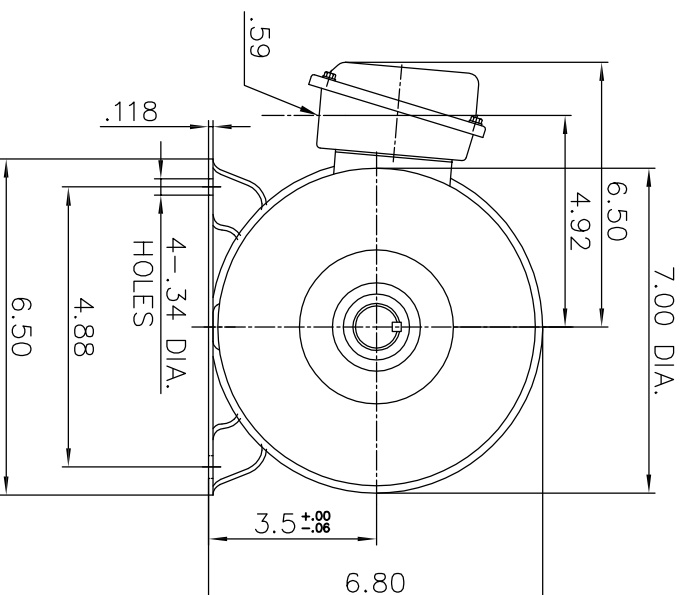
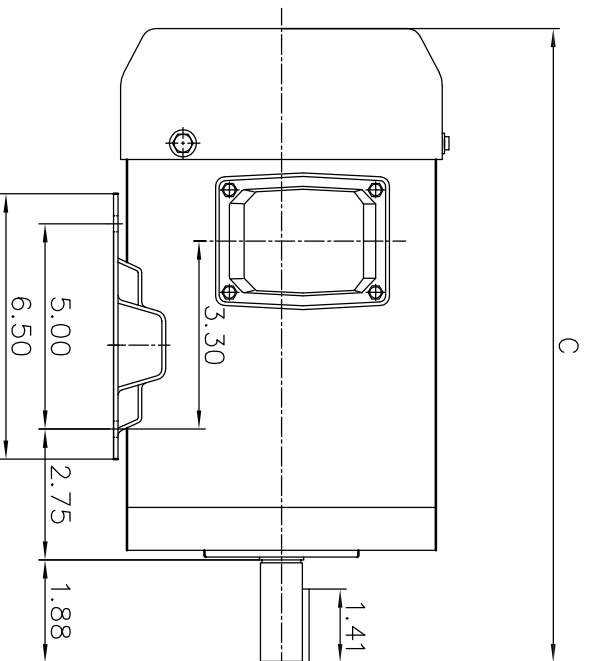


# ALTERNATING CURRENT MOTORS

ENCLOSURE: TOTALLY-ENCLOSED  
MOUNTING: FOOT

SQUIRREL-CAGE INDUCTION  
STAINLESS STEEL FRAME  
FRAME 56H

COOLING: FAN COOLED



**NOTES:**

- (1) DIMENSIONS ARE IN INCHES.
- (2) APPROXIMATE WEIGHT = 3/4HP, 6P, -47 LBS. 1HP, 2P, -48 LBS.  
1HP, 4P, -48 LBS. 1HP, 6P, -48 LBS.  
1.5HP, 2P, -50 LBS. 2HP, 2P, -51 LBS.  
1.5HP, 4P, -51 LBS. 2HP, 4P, -51 LBS.
- (3) DRIVE END BEARING 6205-2RZ  
OPPOSITE DRIVE END BEARING 6205-2RZ

HP	C
3/4HP; 1HP	14.00
1.5HP; 2HP	16.00

FRAME- \_\_\_\_\_ ITEM \_\_\_\_\_ HP- \_\_\_\_\_ RPM- \_\_\_\_\_ PH- \_\_\_\_\_ HZ- \_\_\_\_\_ VOLTS- \_\_\_\_\_  
ORDER- \_\_\_\_\_

CERTIFIED FR-



DR. BY Barry  
CK. BY Sky shen  
APP. BY C. L. Wang  
DATE 2017.04.18

DIMENSION SHEET

SAS-013295