

# ALTERNATING CURRENT MOTORS

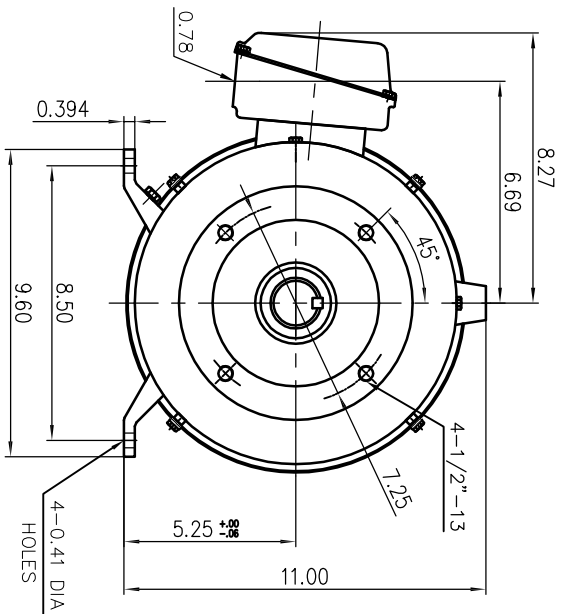
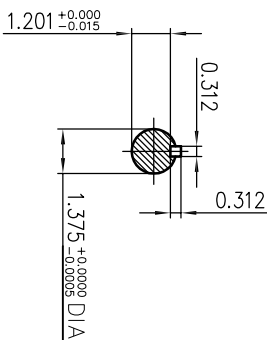
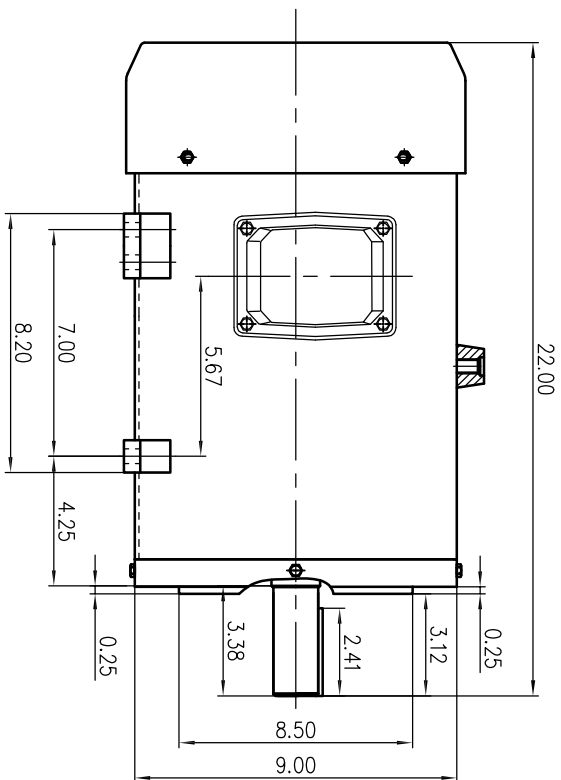
SQUIRREL-CAGE INDUCTION

STAINLESS STEEL FRAME

FRAME 215TC

COOLING: FAN COOLED

ENCLOSURE: TOTALLY ENCLOSED  
MOUNTING: FOOT WITH C-FACE



NOTES:

- (1) DIMENSIONS ARE IN INCHES.
- (2) APPROXIMATE WEIGHT = 5HP,6P,- 170 LBS.  
10HP,2P,- 178 LBS.  
10HP,4P,- 180 LBS.
- (3) DRIVE END BEARING 6208-2RZ  
OPPOSITE DRIVE END BEARING 6208-2RZ

FRAME- \_\_\_\_\_ ITEM \_\_\_\_\_ HP- \_\_\_\_\_ RPM- \_\_\_\_\_ PH- \_\_\_\_\_ CERTIFIED FR- \_\_\_\_\_ VOLTS- \_\_\_\_\_



DR. BY \_\_\_\_\_ Hobby  
OK. BY \_\_\_\_\_ SKY  
APP. BY \_\_\_\_\_ J.L.Wang  
DATE \_\_\_\_\_ 04.17.2017

DIMENSION SHEET

SAS-013299

REMARK (00)