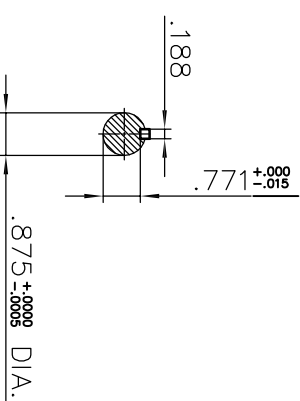
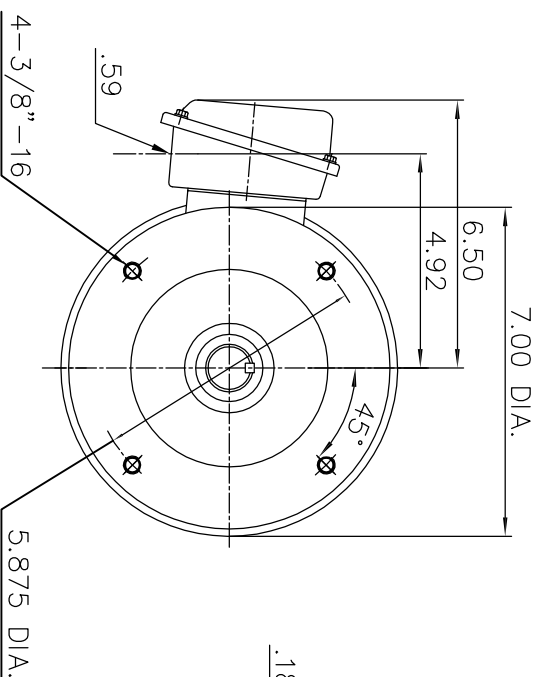
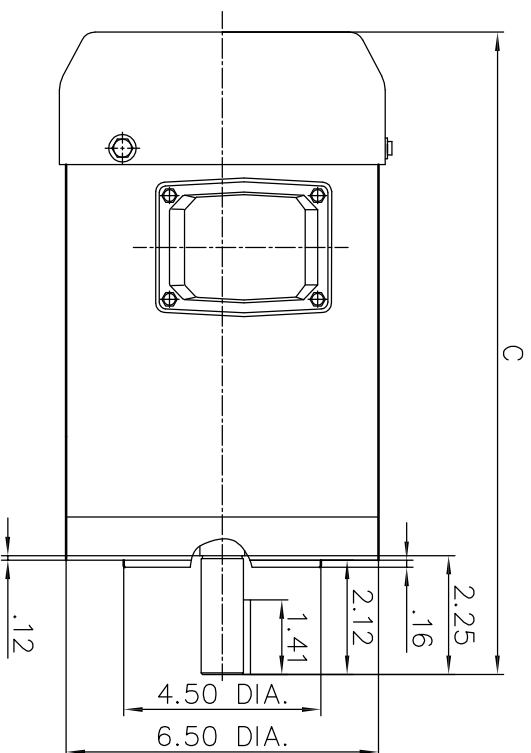


ALTERNATING CURRENT MOTORS

ENCLOSURE: TOTALLY-ENCLOSED
MOUNTING: FOOTLESS WITH C-FACE

SQUIRREL-CAGE INDUCTION
STAINLESS STEEL FRAME
FRAME 145TC

COOLING: FAN COOLED



NOTES:

- (1) DIMENSIONS ARE IN INCHES.
- (2) APPROXIMATE WEIGHT = 1HP, 6P, -44 LBS. 1.5HP, 4P, - 44 LBS.
2HP, 2P, -47 LBS. 2HP, 4P, - 47 LBS.
3HP, 2P, -57 LBS. 3HP, 4P, - 57 LBS.
- (3) DRIVE END BEARING 6205-2RZ
OPPOSITE DRIVE END BEARING 6205-2RZ

HP	C
1HP; 1.5HP	14.20
2HP; 3HP	16.20

FRAME- _____ ITEM _____ HP- _____ RPM- _____ PH- _____ HZ- _____ VOLTS- _____
CERTIFIED FOR- _____



DR. BY Barry
CK. BY Sky Shen
APP. BY C. L. Wang
DATE 2017.04.18

DIMENSION
SHEET

SAS-013311